



MAXXI FLOORS

INSTALLATION INSTRUCTIONS SPC FLOORS

- 1) SOIL HUMIDITY**
- 2) GROUND LEVEL**
- 3) HEATING SYSTEM**
- 4) RELATIVE WEIGHTS ON THE GROUND**
- 5) INSTALLATION RECOMMENDATIONS**
- 6) DAILY MAINTENANCE**

Important:

When you start installing this product, you must agree that you read and understood all the requirements necessary for the correct installation of this product.

A deviation in the interpretation of these instructions and recommendations can lead to poor placement and loss of the floor.

Check the slats carefully for possible damage or inconvenience prior to installation. Make sure they match the selected decorative design and size. The installer/placer assumes full responsibility for the customer's chosen design, brightness, texture. If not, please contact the provider.

It is very important that floors maintain the appropriate temperature before, during and after installation, to minimize dimensional changes.

At the end of the placement, the environment must be maintained at a stable temperature between 13oC and 35oC.



INSTALLATION INSTRUCTIONS SPC FLOORS

1) SOIL HUMIDITY

- It is recommended to use instruments to measure the ambient temperature and humidity of the soil, to check the environment where the floor will be placed. The ambient temperature should be between 13oC and 35oC

SPC floors are not a moisture barrier, so we suggest that when it comes to a new work, a 200 micron nylon steam barrier is placed overlapping and taped. Also in new works or areas of higher concentration of humidity such as countries, fields, etc. the folder must have at least 90 days of aerated. It must be completely dry and cured.

The high humidity levels that rise from the new folders produce high concentrations of vapour pressure, hydrostatic pressure and high levels of alkalinity. This combination is highly corrosive and causes damage to the floor. To avoid this, a ph test and vapour emission levels can be performed (a 100 micron taped nylon is placed. It is left to rest 72 hours, then it is removed and checked whether or not the folder has the accepted humidity).

Test that the folder does not exceed 13% humidity, paying particular attention to areas near the walls and doors windows (areas where residual moisture accumulates by poorly setting silver or folder).



- DO NOT INSTALL THE FLOOR IF THE MOISTURE TEST EXCEEDS THE RECOMMENDED LIMITS.- THE RESPONSIBILITY TO DETERMINE IF THE FOLDER IS DRY ENOUGH FOR A CORRECT INSTALLATION IS OWNED BY THE OWNER AND INSTALLER.

INSTALLATION INSTRUCTIONS SPC FLOORS





2) GROUND LEVEL

- It is recommended to use a flatness detector and/or level, to detect the flatness of the base floor, with a ruler or element that does not have a size less than 2 meters. The folder must be fully level and not have variations that exceed +/-5mm (of imperfections -loin and valleys-). The entire surface of the folder where the floor will be placed must be dry, clean, firm, flat, smooth and motion-free.



INSTALLATION INSTRUCTIONS SPC FLOORS

3) HEATING SYSTEM

- For a safe installation of SPC floors on radiant slabs, it needs to be on and running 24 hours a day, for 10 continuous days, prior to installation, to reduce moisture in the folder.

The temperature of the radiant slab should never exceed 29 degrees and should be placed if or yes, a 200 micron nylon vapor barrier blanket, overlapped, sealed and taped in all joints.

Any damage to the floor by the radiant slab is the responsibility of the installer and/or owner, and will not be taken into account in the face of any claims.

The radiant slab boiler must have a SET POINT (cut) not higher than 40oC, which equates to 22/25 degrees of ambient temperature. IT IS IMPORTANT TO MAKE THIS CLARIFICATION since the s



handles and heating by aluminum radiators use the same CALDERAS and SET POINT (for the latter it is 70 degrees).

- It is essential to remove any excess residual moisture that may contain the folder. For this purpose it is recommended to apply a primer on it, prior to the installation of the blanket under floor and the floating floor waterproof. Our company recommends the application of the PRODUCT PRIMER MF (Mapei). You can request the technical sheet of this product, to internalize yourself on its applications, compounds and characteristics.

The most common question is: Why if the floor is "WATERPROOF" do you have to take these precautions? The answer to this is: that the temperature generated by the boiler, added to the remaining humidity, converts it into steam (caloric energy) that damages the floor, which although it is waterproof is not prepared to withstand that aggression.

4) RELATIVE WEIGHTS ON THE GROUND

- When the placement to be performed in an environment, whatever the direction (width or length) the measurement of it exceeds 7 linear meters, a so-called technical cut ("dilation profile") must be made. Select the place that aesthetically allows the environment, but prevent 7 linear meters installed without interruption.

If there is furniture that exceeds 250 kilos, the expansion space in the opposite place of such furniture must be doubled, since the floor tends to dilate through the free space.

INSTALLATION INSTRUCTIONS SPC FLOORS

5) INSTALLATION RECOMMENDATIONS

- Moisture barrier is required for any Maxxifloors SPC installation.
- To carry out the installation, you will need an under-floor blanket suitable for SPC floors, made of eva rubber material with a thickness not more than 1.5 mm.

Mantas recomendadas: **SILENT STEP** 1 mm, **SOUND BLOCK** 1 ,5mm ó **SAFE STEP** 1 ,5mm.

Slats should NOT be pasted, nailed, or fixed other than the click installation system (e.g. the door stop) in the folder. ALWAYS when moving from one environment to another one totransition rod should be placed.

INSTALLATION: - Using the first row of slats, remove the tab and place this side against the wall (put it right).



- For precise cutting of the last slat in the first row, rotate 180 degrees and, with the pattern side facing up, mark the cut and cut.
- Always look from the top surface of the slats (to avoid chipping the edges).
- Only when using a hand saw or circular saw, the side of the drawing should be down, so as not to damage the decorative sheet.
- Connect the slats of the first row on the short side in the entire length of the room. The slats of the remaining rows are intertwined with the next slat by turning them down leaving a small space at the short end. - Then tap the ribbon very gently until the joint clicks. - If the wall is not straight: place the first row against the wall with a spacer and a pencil, then transfer the contour of the wall to the slats and look along the marks.
- Start each new row with the leftover part from the previous row. - Cross joints must be compensated by at least 30 cm. Please take special care that the first three rows are perfectly straight.

Slats must pass under the frame/counter mark of the doors, this means that the floor must not be installed at the top against it. If so, it would not allow for the corresponding expansion.

In narrow corridors or places, perimeter expansion must also be left and technical cuts respected.

- SPC floors are only to be installed in indoor environments. Please install them on the outside.
- SPC floors can be placed on any rigid pre-existing floor, but not on padded floors (carpets) and always with recommended blankets.

INSTALLATION INSTRUCTIONS SPC FLOORS

6) DAILY MAINTENANCE

- SPC floors are Waterproof, although they are trap-resistant with wet elements, they do not support parting or cleaning with hose and/or water washers. They are not submersible: not by the floor itself, but by the accumulation of liquid that filters and falls below it and makes it unstable.

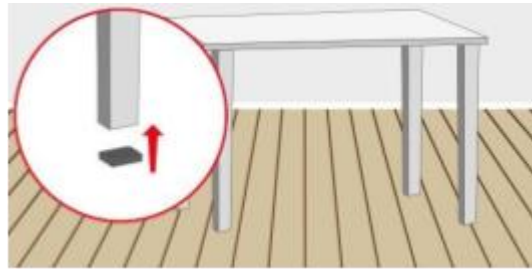
Cleaning:

- Bar the floor regularly to remove remaining dirt.
- A barely damp mop with neutral soap is recommended. The sweep alone is not enough. • Do not attempt to clean this floor with wax, polishes, solvents, chlorinated liquids, lavenders, etc.



Care:

- Place dirt-absorbing mats in areas of heavy traffic, such as entrances or corridors.
- Place felt tips on the feet of furniture.
- For office chairs, the wheels must be silicone and/or injected rubber. And use a rug to protect the floors.
- Ultraviolet rays can alter the color of the floor, so it is advisable to take care of them, using curtains.
- Protect the floor when transporting furniture or appliances, never push, slide furniture or heavy appliances by dragging them.



PLACEMENT ERRORS

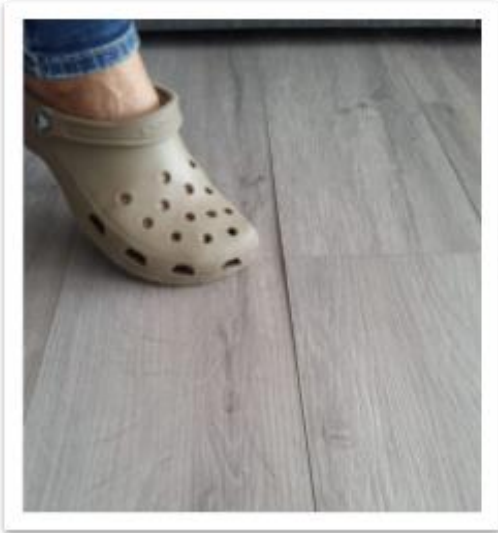


THIS SHOULD NOT BE DONE

- Place the floor without eva rubber blanket 1mm or 1.5mm thick.
- DO NOT HIT THE FLOOR TO INSTALL IT

Molding and counter-molding are over a thickness of 4mm. Pressing the tapping box damages the click. When the floor is dilated, and the click is previously broken by a sharp stroke, it ends up breaking linearly completely.

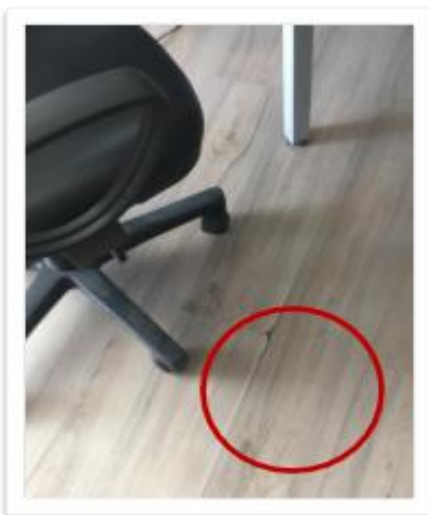
COMMON SITUATIONS WITH FLOORS WITHOUT PROPER DILATION



Floor installed with an unsuitable 3mm blanket.



Floor that does not have the corresponding expansion, makes it soften the click

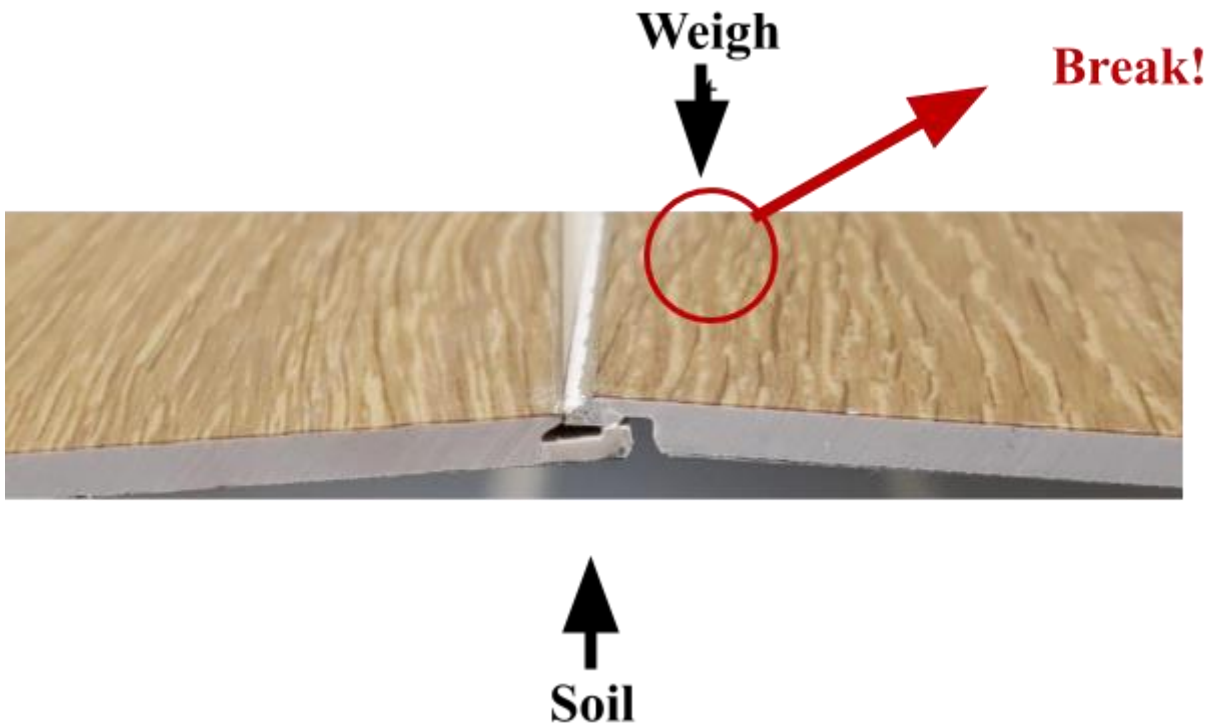


Floor that does not have adequate expansion, and with unsuited chairs. They make use not appropriate.





SPC BREAK TRIANGLE



Floor that does not have the proper expansion.
Being the SPC a rigid floor, which does not deform, rises on its weaker side and overload (high traffic areas, chairs with wheels, etc.) causes the product to break

